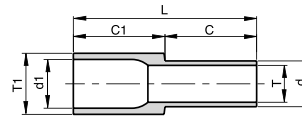


RW-W

REDUCER

Without shoulder

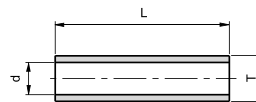


| Ordering Information | L | | C1 | | C | | d1 | | d | | T1 Tube O.D. | W.T. (T1) | | T Tube O.D. | W.T. (T) | |
|---------------------------------|------|------|------|------|------|------|------|------|------|------|--------------|-----------|-------|-------------|----------|-------|
| | mm | inch | mm | inch | mm | inch | mm | inch | mm | inch | inch/mm | mm | inch | inch/mm | mm | inch |
| V-RW-1/4X1/8-W | 38.1 | 1.50 | 19.1 | 0.75 | 19.1 | 0.75 | 4.6 | 0.18 | 1.9 | 0.07 | 1/4" | - | 0.035 | 1/8" | - | 0.028 |
| V-RW-3/8X1/4-W | 38.1 | 1.50 | 19.1 | 0.75 | 19.1 | 0.75 | 7.7 | 0.30 | 4.6 | 0.18 | 3/8" | - | 0.035 | 1/4" | - | 0.035 |
| V-RW-1/2X1/4-W | 38.1 | 1.50 | 19.1 | 0.75 | 19.1 | 0.75 | 10.2 | 0.40 | 4.6 | 0.18 | 1/2" | - | 0.049 | 1/4" | - | 0.035 |
| V-RW-1/2X3/8-W | 38.1 | 1.50 | 19.1 | 0.75 | 19.1 | 0.75 | 10.2 | 0.40 | 7.7 | 0.30 | 1/2" | - | 0.049 | 3/8" | - | 0.035 |
| V-RW-3/4X1/2 W W.T.=0.049 | 38.5 | 1.51 | 19.1 | 0.75 | 19.1 | 0.75 | 16.6 | 0.65 | 10.2 | 0.40 | 3/4" | - | 0.049 | 1/2" | - | 0.049 |
| P-RW-3/4X1/2 W W.T.=0.065X0.049 | 38.5 | 1.51 | 19.1 | 0.75 | 19.1 | 0.75 | 15.8 | 0.62 | 10.2 | 0.40 | 3/4" | - | 0.065 | 1/2" | - | 0.065 |
| P-RW-3/4X1/4 W W.T.=0.049X0.035 | 38.5 | 1.51 | 19.1 | 0.75 | 19.1 | 0.75 | 16.6 | 0.65 | 4.6 | 0.18 | 3/4" | - | 0.049 | 1/4" | - | 0.049 |
| P-RW-1X1/2 W W.T.= 0.065X0.049 | 40.5 | 1.59 | 19.1 | 0.75 | 19.1 | 0.75 | 22.1 | 0.87 | 10.2 | 0.40 | 1" | - | 0.065 | 1/2" | - | 0.049 |
| V-RW-8MM X 6MM-W | 38.1 | 1.50 | 19.1 | 0.75 | 19.1 | 0.75 | 6.0 | 0.24 | 4.0 | 0.16 | 8mm | 1.00 | - | 6mm | 1.00 | - |
| V-RW-10MM X 6MM-W | 38.1 | 1.50 | 19.1 | 0.75 | 19.1 | 0.75 | 8.0 | 0.31 | 4.0 | 0.16 | 10mm | 1.00 | - | 6mm | 1.00 | - |
| V-RW-10MM X 8MM-W | 38.1 | 1.50 | 19.1 | 0.75 | 19.1 | 0.75 | 8.0 | 0.31 | 6.0 | 0.24 | 10mm | 1.00 | - | 8mm | 1.00 | - |
| V-RW-12MM X 6MM-W | 38.1 | 1.50 | 19.1 | 0.75 | 19.1 | 0.75 | 10.0 | 0.39 | 4.0 | 0.16 | 12mm | 1.00 | - | 6mm | 1.00 | - |
| V-RW-12MM X 8MM-W | 38.1 | 1.50 | 19.1 | 0.75 | 19.1 | 0.75 | 10.0 | 0.39 | 6.0 | 0.24 | 12mm | 1.00 | - | 8mm | 1.00 | - |
| V-RW-12MM X 10MM-W | 38.1 | 1.50 | 19.1 | 0.75 | 19.1 | 0.75 | 10.0 | 0.39 | 8.0 | 0.31 | 12mm | 1.00 | - | 10mm | 1.00 | - |

UB-W

BUTTWELD UNION

Without shoulder



| Ordering Information | L | | d | | T Tube O.D | W.T. |
|------------------------|------|------|------|------|------------|-------|
| | mm | inch | mm | inch | inch | inch |
| V-UB-1/4-W | 24.3 | 0.96 | 4.6 | 0.18 | 1/4 | 0.035 |
| V-UB-3/8-W | 23.9 | 0.94 | 7.7 | 0.30 | 3/8 | 0.035 |
| V-UB-1/2-W | 23.4 | 0.92 | 10.2 | 0.40 | 1/2 | 0.049 |
| P-UB-3/4-W W.T.=0.049 | 23.4 | 0.92 | 16.6 | 0.65 | 3/4 | 0.049 |
| P-UB-3/4-W W.T.=0 .065 | 23.4 | 0.92 | 15.8 | 0.62 | 3/4 | 0.065 |
| P-UB-1-W W.T.=0 .065 | 29.7 | 1.17 | 22.1 | 0.87 | 1 | 0.065 |

Dimensions are for reference only, and are subject to change without notice.
When ordering, be sure to add the Surface-Finish Designator (either H or E) to the Part Number. (See Material Table, page 157).